



M+F Technologies GmbH

Helbingtwiete 5 | 22047 Hamburg | Germany

Phone +49 (0)40 72550 0

Fax +49 (0)40 72550 111

info@m-f.tech | www.m-f.tech



M+F | Systems

UPC_2000

**Weights & Measures approved
Legal Document Database
Digital Logging and Archiving of W&M data**

The UPC_2000 is the first Original Document Computer that enables a digital storage and archiving of W&M data which had to be printed by an original voucher printer via PTB-Protocol so far.

The UPC_2000 has been developed in close collaboration with the PTB and fulfils all requirements of official calibration authorities for the storage of W&M data.

Due to its integration into a computer network the UPC_2000 can be expanded in any desired number without interfering with the W&M data.

Convenient search functions allow a modern data management.



* Figure exemplary

**CHARACTERISTICS**

Approvals	PTB
Installation	Standard installation of the UPC_2000 is on a M+F Desktop Computer
Dimensions	W 170 mm x D 360 mm x H 360 mm
Weight	5.600 g
Supply voltage	220-240 VAC Output = 200 W
Operating System	Windows 10 Pro
Software	Software: UPC_2000 Logger + Viewer
Configuration	CPU Dual Core 2x 3,6 Ghz RAM 4 Gbyte RAM Harddisk Drive 2 x 1TB, MTBF 1.000.000 h, 24/7 operation
NIC	10/100/ 1000 TX PCI (optional)
Interfaces	2/3/5/9-fold serial DB9, max. 2 cards
Further ports for	Mouse and Keypad: USB Monitor: VGA-HD D-Sub (HD-15) 15-pole / DVI Network: RJ45
Accessories (includes in delivery)	Keypad (German or English) Mouse

DESCRIPTION

UPC Logger

The UPC_Logger is a programme module for W&M purposes. It receives data sent by a meter and stores them in an encoded database.

The UPC_Logger replaces the original loading document.

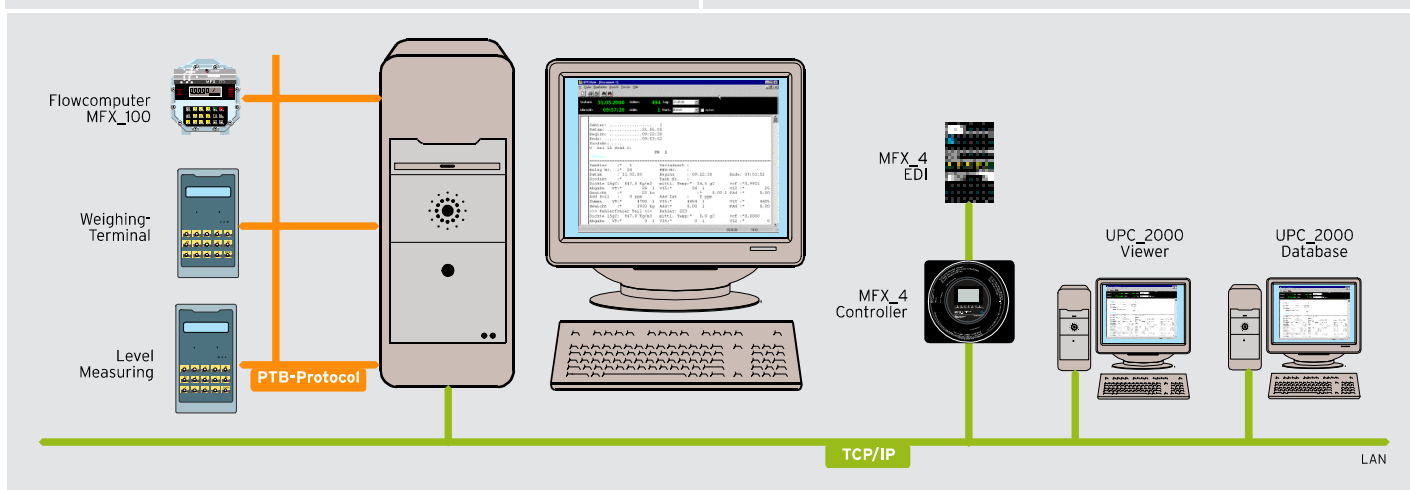
UPC Database

The UPC_Database provides the possibility to select data through free configurable criteria. The selected data is then archived in a database, in which different functions, e.g. search functions and statistic functions, are available.

UPC Viewer

The UPC_Viewer is designed to display loading documents. It is arranged outside the W&M space. The UPC_Viewer can be operated on the same computer like the UPC_Logger, or on one or more separate computers. It decodes the original loading data to display them.

The UPC_Viewer can also search for certain loading documents through input of search terms.

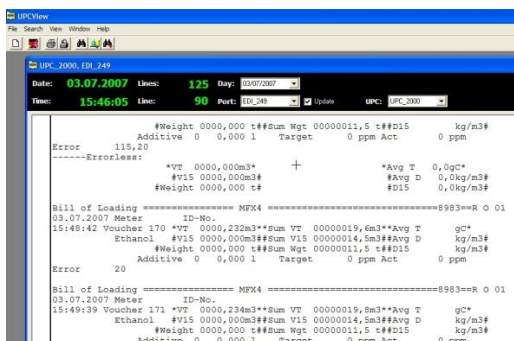


ADVANTAGES

- Digital archiving of loading data with a relevant economy of paper and paper archiving
- PTB approved
- Latest computer technology based on MS-Windows
- Optimal archiving of loading documents including search functions
- Integration into existing and running systems without modification

- Connection to all Flowcomputers / Weighing Installations with interface to the PTB loading document printer and to MFX_4 Systems
- Network suitable
- LAN is expandable by further UPC_Viewer without interfering in the W&M data
- Redundant operation of two UPC's [optional]

OPERATION

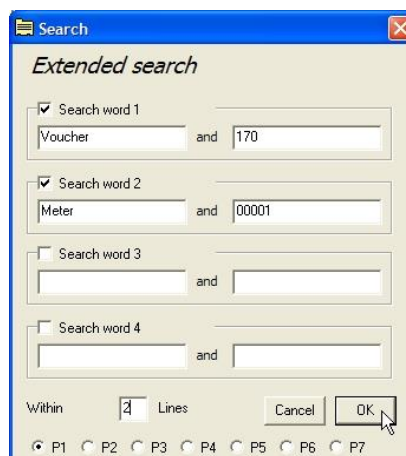
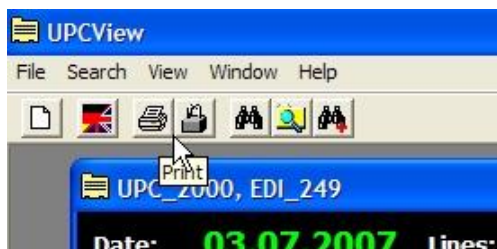


UPC Viewer

The UPC_Vviewer is a visualisation programme that accesses to the legal loading document data without modifying them. The status bar displays date and time of the data line creation as well as line number and position. The creation date of the loading documents and the corresponding loading station are displayed on the right hand side.

Loading original documents

For loading an original document, its creation date can be selected via the calendar function. Also, the corresponding meter has to be selected. The original document is now displayed in the form in which it is received from the meter.



Printing original documents

Each original document can be printed on the loading document printer. After being printed, the original document is kept as a "copy" in the data storage.

Searching for original documents

A search function provides the opportunity to search and display a loading document through input of a search term into the database. An advanced search function allows searching for multiple terms simultaneously.