

## CBU – Compact Blending Unit – Version 5

Our "Compact Blending Units" (CBU) additive units, which have been tried and tested for decades, have been fundamentally redesigned.

Due to the growing demands for flexibility in the field of additives, we have successively expanded our product portfolio in recent years. Today we can fall back on CBU variants which, taken together, meet all the requirements of modern dosing systems.

Solo or built into a protective housing and optionally heated, they not only offer protection against tampering, but also allow installation and operation under the harshest of weather conditions.

### CBU SINGLE

Key features:

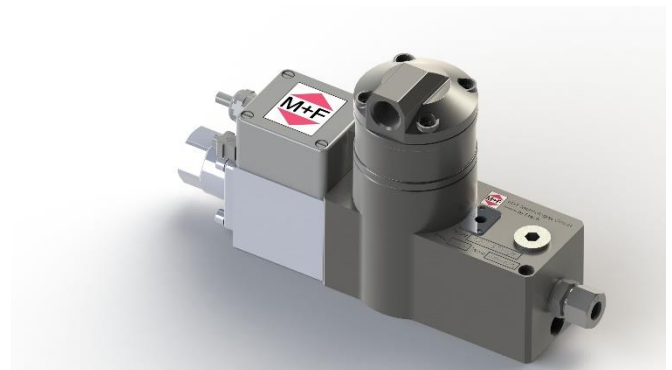
- Meters: Ex d or Ex i
- Flow range: 0.25-9.5 (11.0) l /min
- Pulse resolution: 710Imp/min, 10.000 pulses/l (optional)
- Digital dosing valve: 24VDC / 230VAC/110VAC
- Temperature range.: -15°C / +40°C / others on request
- Heated to -50°C outdoor temperature

### CBU COMBINED

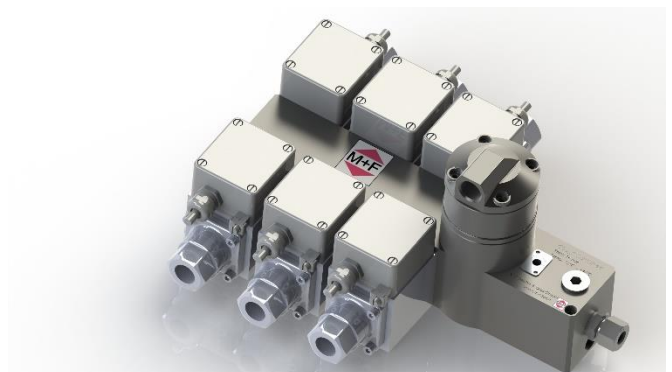
Key features:

- Up to 10 additives via one manifold
- Protective housing (optional)
- Heating (optional)
- Analogue or digital control
- Flushing mode to avoid additive contamination

- Unique variety of variants
- Explosion-proof or intrinsically safe magnetic pickup
- Flexible expandability
- Digital or analog dosing control
- "Booster" function for pressure increase and flow control
- Protective housing and heating (optional)
- Compatible with all common flow computers and mixture controllers



↑ CBU Single



↑ CBU Combined

#### Info - Additives

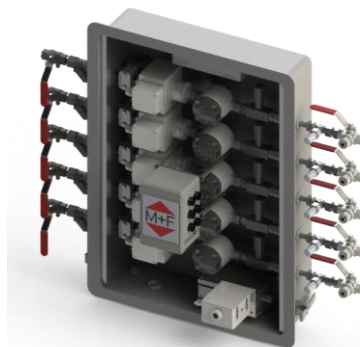
Additivation is the refining of basic fuels with specific additives. This turns a basic product into the special fuel that is delivered to the consumer at filling stations. Particularly since tank terminals are used jointly by various companies for stockpiling and filling tank trucks and tank wagons, the addition of additives to fuels has become considerably more important when filling vehicles. It enables the drastic reduction of the tank space or the economic, flexible use of the existing tank space and the associated handling facilities. This covers a broad spectrum in the production of different product qualities.

# CBU – Compact Blending Unit – Version 5

## CBU MULTI

### Key features:

- Basic data as for "SINGLE".
- Up to 5 additives in parallel
- Protective housing (optional)
- Heating (optional)
- No mixing and therefore no contamination of the additives

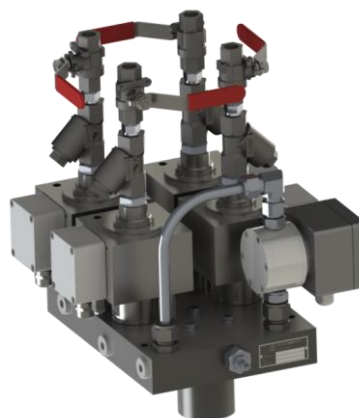


← CBU Multi

## CBU MINI

### Key features:

- Basic data as for "SINGLE".
- Up to 4 additives per CBU
- Extremely compact design
- Can be mounted directly on pipeline



← CBU Mini

## Overview of the functions

Comparison of the model variants	„SINGLE“	„COMBINED“	„MINI“	„MULTI“
Pulse output in intrinsically safe version (Ex i)	✓	✓	✓	✓
Pulse output in explosion-proof version (Ex d)	✓	✓	✓	✓
Power supply 24 VDC	✓	✓	✓	✓
Power supply 230 VAC, 50hz	✓	✓	✓	✓
Power supply 110 VAC, 60hz	✓	✓	✓	✓
Digital flow control	✓	✓	✓	✓
Analogue proportional flow control	✓	✓	–	✓
Booster function with frequency controlled flow control	✓	✓	–	–
Installation in protective box with optional heater	–	✓	–	✓
Max. Number of additive connections (Standard, others on request)	1	10	4	5
Subsequent expandability of further additives	Std 1, expandable to 10	Std 2, expandable to 10	Std 1, expandable to 4	Std 1, expandable to 5
Flushing function to avoid Additriiv mixing	–	✓	✓	–
Complete separation of the individual additives from each other	–	–	–	✓
Subsequent expandability	✓	✓	✓	✓
Pulse output in intrinsically safe version (EEx i)	✓	✓	✓	✓

**Contact:** M+F Technologies GmbH, Helbingtwiete 5, D-22047 Hamburg  
sales@m-f.tech | www.m-f.tech